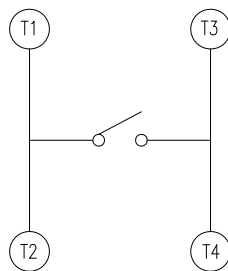
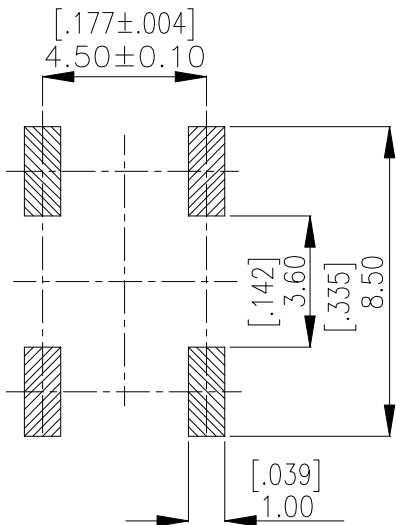
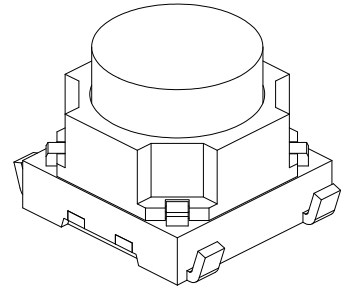
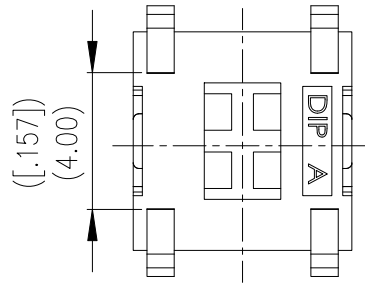
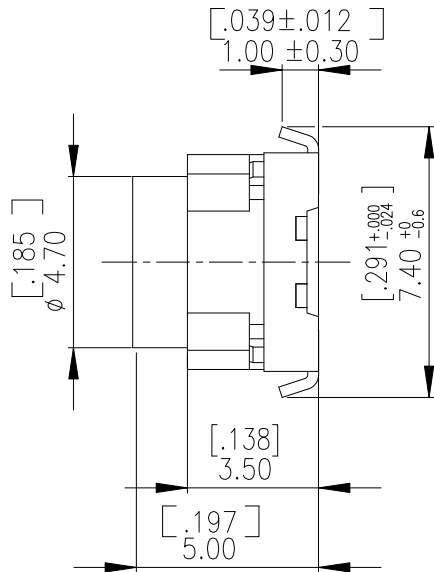
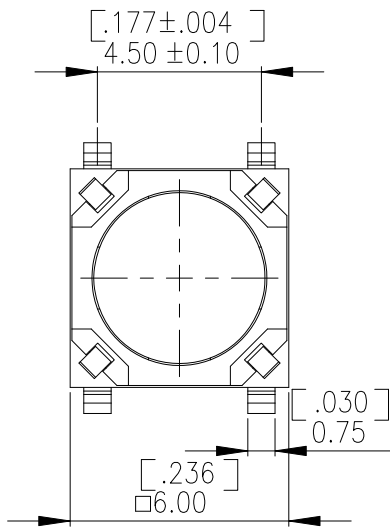


LTL-6 SERIES



DIMENSIONS

LTL-6



NOTE:
 1. ALL DIMENSIONS ARE IN MILLIMETER, BRACKETED DIMENSIONS ARE IN INCHES.
 2. GENERAL TOLERANCES ±0.20mm.

P.C.B. LAYOUT

CIRCUIT DIAGRAM

HOW TO ORDER

LTL-6 13 □ V-T/R

- Package Style :
T/R= Tape & Reel
- Soldering :
V=RoHS & Lead Free Solderable
- Operating Force :
R= 200gf
S=350gf
- Travel:
13= 1.3mm
- Prod. Size:
6 X 6 mm
- Terminal Type :
L= With L S.M.T Terminal
Long Travel Tact Switch

SPECIFICATION

△MECHANICAL

Operation Force: 200±50gf (R)
350±50gf (S)

Operation Temperature: -40°C to +85°C

Storage Temperature: -40°C to +85°C

Stroke: 1.30+0.1/-0.3mm

△ELECTRICAL

Electrical Life: 100,000 cycles (200gf)
30,000 cycles (350gf)

Rating: 50 mA 12 V DC.

Contact Resistance: 100mΩ max. at 500VDC

Insulation Resistance: 100MΩ min. at 500VDC

Dielectric Strength: 300V AC/1 minute.

Contact Arrangement: 1pole 1throw

MATERIAL

△COVER : NYLON UL 94V-0 High-Temp Thermoplastic

Color: Black.

△Silicone Dome : Silicone rubber with metal contact
With Gold Plating

△STEM : NYLON UL 94V-0 High-Temp Thermoplastic

Color: Red.

△BASE : NYLON UL 94V-0 High-Temp Thermoplastic

Color: Black.

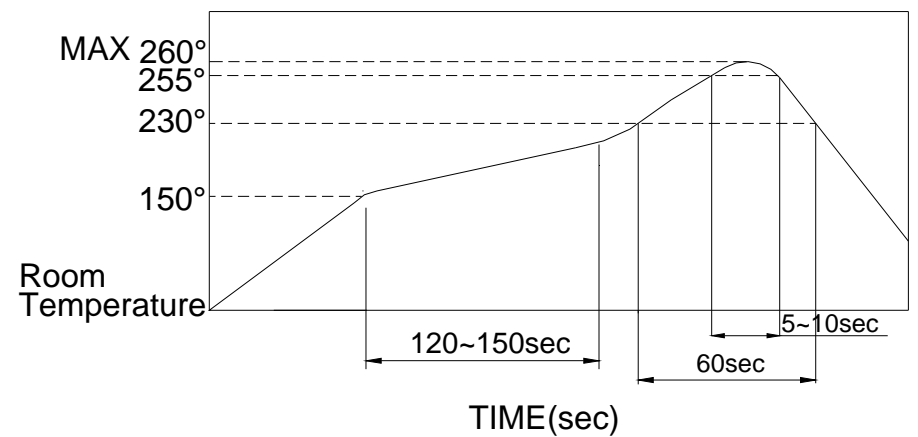
△TERMINAL : Brass , With Silver Plating

SOLDERING PROCESSES

△HAND SOLDERING : Use a soldering iron of 30 watts, controlled at 350°C approximately max 5 seconds while applying.

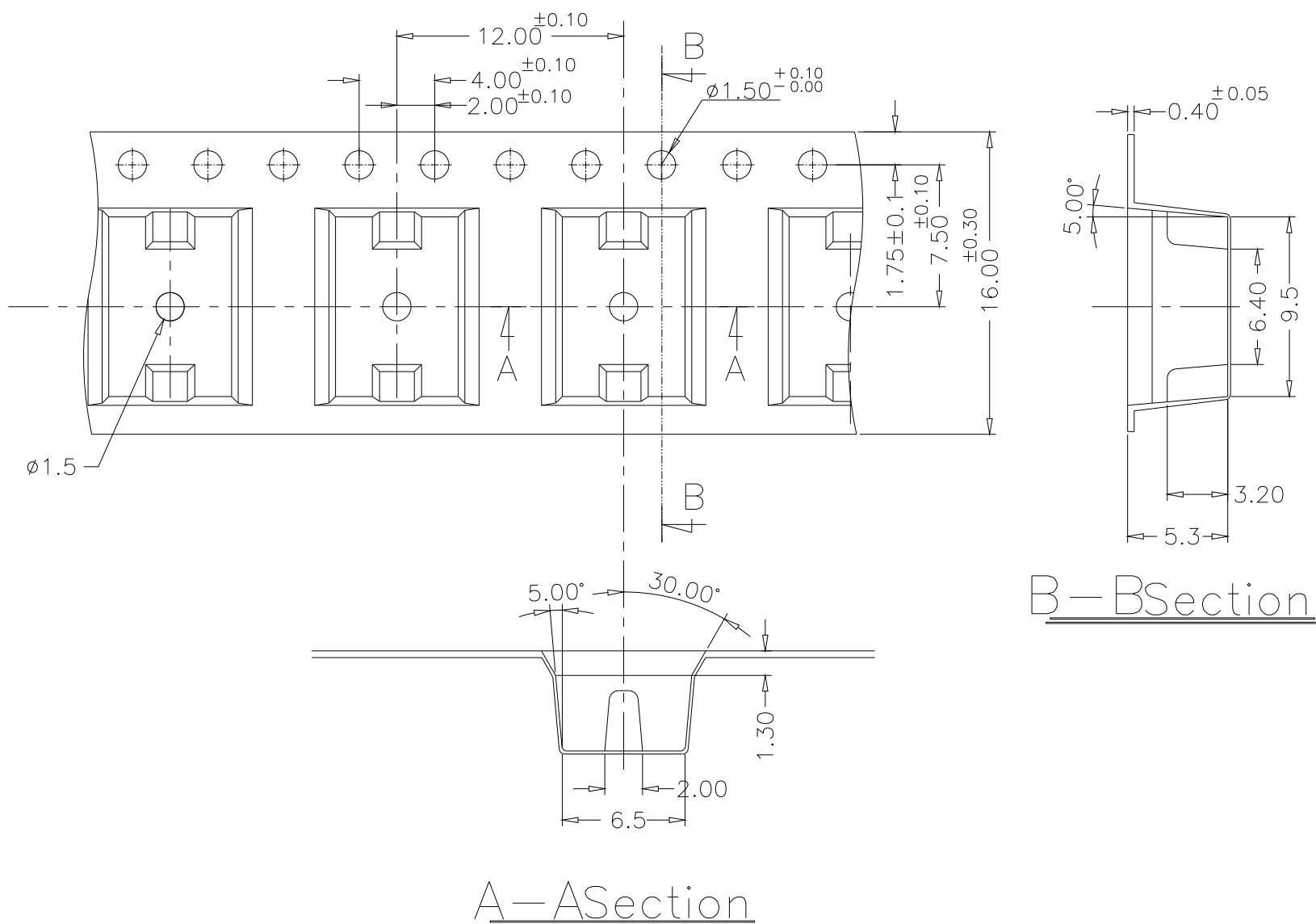
△REFLOW SOLDERING: When applying reflow soldering, the peak temperature or the reflow Oven should be set at 260°C max.

△Reflow Temperature Profile:



PACKING

| Part Number | Number Per Tube | Number Per Reel |
|-------------|-----------------|-----------------|
| | - | 900 |



General Tolerance : ±0.1mm